



Lumistar luminaire ASL 55-LED

- Fully enclosed high-power luminaire with protective glass
- Aluminium
- Suitable for circular sight glass fittings to DIN 28120/28121 or similar from size DN 40; for screw-type sight glass fittings to DIN 11851 from DN 65
- Rated voltage/output, depending on luminaire version: 12 V, 24-48 V or 120-230 V,
- 3 or 6 high-power LEDs with 11 or 15 W
- Protection class: IP 65
- Reflector: 10° or 25°
- Mounting by stainless steel hinged bracket to the counterflange of the sight glass fitting or by flange collar (DIN 11851)
- Data sheet: 3755.432



Lumistar luminaire ASL 57-LED

- Fully enclosed high-power luminaire with protective glass
- Aluminium
- Suitable for circular sight glass fittings to DIN 28120/28121 or similar from size DN 40; for screw-type sight glass fittings to DIN 11851 from DN 65
- Rated voltage/output: 24 V AC/DC, 120-230 V AC – 35 W
- Protection class: IP 65
- Reflector: 10° or 25°
- Mounting by stainless steel hinged bracket or by flange collar (DIN 11851)
- Data sheet: 3755.314



Lumistar luminaire USL 05-LED

- Fully enclosed power luminaire with protective glass
- Aluminium
- Compact design
- Suitable for circular sight glass fittings to DIN 28120/28121 or similar from size DN 25; for screw-type sight glass fittings to DIN 11851 from DN 65
- Rated voltage: 230 V
- Output: up to 5 W (LED)
- Protection class: IP 65
- Mounting by stainless steel hinged bracket to the counterflange of the sight glass fitting or by flange collar (DIN 11851)
- Data sheet: 3755.175



Lumistar luminaire USL 07-LED

- Fully enclosed high-power luminaire with protective glass
- Aluminium
- Suitable for circular sight glass fittings to DIN 28120/28121 or similar from size DN 50; for screw-type sight glass fittings to DIN 11851 from DN 65
- Rated voltage/output: 24 V AC/DC, 120-230 V AC – 14 W
- Protection class: IP 65
- Reflected beam angle: 11° or 26°
- Mounting by hinged bracket or by flange collar (DIN 11851)
- Data sheet: 3755.367



Lumistar luminaire USL 05

- Fully enclosed power luminaire with protective glass
- Aluminium
- Suitable for circular sight glass fittings to DIN 28120/28121 or similar from size DN 25; for screw-type sight glass fittings to DIN 11851 from DN 65
- Rated voltage: 24 V, 120 V, 230 V
- Output: up to 50 W (halogen light bulb)
- Protection class: IP 65
- Mounting by stainless steel hinged bracket to the counterflange of the sight glass fitting or by flange collar (DIN 11851)
- Data sheet: 3755.175



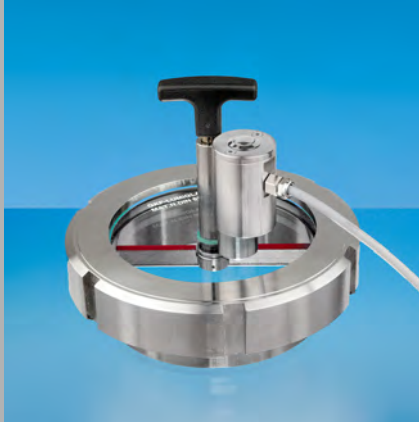
Lumistar luminaire USL 06

- Fully enclosed power luminaire with protective glass
- Aluminium
- Suitable for circular sight glass fittings to DIN 28120/28121 or similar from size DN 25; for screw-type sight glass fittings to DIN 11851 from DN 65
- Rated voltage: 12 V, 24 V, 120 V, 230 V
- Output: up to 100 W (halogen light bulb)
- Protection class: IP 65
- Mounting by stainless steel hinged bracket to the counterflange of the sight glass fitting or by flange collar (DIN 11851)
- Also available in stainless steel as variant ESL 26
- Data sheet: 3755.176



Lumistar luminaire USL 07

- Fully enclosed power luminaire with protective glass
- Aluminium
- Suitable for circular sight glass fittings to DIN 28120/28121 or similar from size DN 50; for screw-type sight glass fittings to DIN 11851 from DN 65
- Rated voltage: 12 V, 24 V, 120 V, 230 V
- Output: up to 100 W (halogen light bulb)
- Protection class: IP 65
- Mounting by two brackets to the counterflange of the sight glass fitting
- Extra large light aperture (Ø 95 mm)
- Also available as a variant with flexible light guide and as a variant in stainless steel (see Lumistar Ex-sight glass luminaires)
- Data sheet: 3755.179



Lumistar luminaire ESL 51-LED

- Fully enclosed compact luminaire with protective glass
- Stainless steel
- Smooth body
- Rated voltage/output: 24 V AC/DC – 2.5 W (LED)
- Protection class: IP 65
- Mounting by stainless steel hinged bracket to the counterflange of the sight glass fitting; alternatively by clip for attaching to a Lumiglas sight glass wiper or by flange collar (DIN 11851)
- Data sheet: 3755.361



Lumistar luminaire ESL 53-LED

- Sight glass luminaire for universal applications
- Stainless steel
- Rated voltage/output: 24 V AC/DC – 7 W (LED)
- Protection class: IP 65
- Mounting by stainless steel hinged bracket to the counterflange of the sight glass fitting or by flange collar (DIN 11851)
- Data sheet: 3755.322



Lumistar luminaire ESL 55-LED

- Sight glass luminaire for universal applications
- Stainless steel
- Rated voltage/output, depending on luminaire variant: 12 V, 24-48 V or 120 – 230 V; 3 or 6 high-power LEDs with 11 or 15 W
- Protection class: IP 65
- Reflector: 10° or 25°
- Mounting by stainless steel hinged bracket to the counterflange of the sight glass fitting or by flange collar (DIN 11851)
- Data sheet: 3755.432



Lumistar luminaire USL 01

- Fully enclosed compact luminaire with protective glass
- Stainless steel
- Smooth body
- Suitable for circular sight glass fittings to DIN 28120/28121 and for screw-type sight glass fittings similar to DIN 11851
- Mounting by stainless steel hinged bracket to the counterflange of the sight glass fitting; alternatively by clip for attaching to a Lumiglas sight glass wiper or by flange collar (DIN 11851)
- Rated voltage: 12 V, 24 V
- Output: up to 20 W (halogen light bulb)
- Protection class: IP 65
- Outside diameter USL 01: only 24 mm, thus also suitable for rectangular and oval fittings
- Data sheet: 3755.272



Lumistar luminaire USL 03

- Fully enclosed compact luminaire in lightweight design with protective glass
- Stainless steel
- Smooth body
- Suitable for circular sight glass fittings to DIN 28120/28121 from DN 25 and for screw-type sight glass fittings similar to DIN 11851
- Rated voltage: 12 V, 24 V
- Output: up to 50 W (halogen light bulb)
- Protection class: IP 65
- Mounting by stainless steel hinged bracket to the counterflange of the sight glass fitting or by flange collar (DIN 11851)
- Also available as LED version
- Data sheet: 3755.155



Lumistar luminaire USL 13/USL 33

- Fully enclosed compact luminaire in lightweight design with protective glass
- Stainless steel
- Smooth body
- Suitable for circular sight glass fittings to DIN 28120/28121 from DN 25 and for screw-type sight glass fittings similar to DIN 11851 from DN 50
- Rated voltage: 12 V, 24 V, 120 V, 230 V
- Output: up to 50 W (halogen light bulb)
- Protection class: IP 65
- Mounting by stainless steel hinged bracket to the counterflange of the sight glass fitting or by flange collar (DIN 11851)
- USL 33 = version for sterile work environments
- Also available as UL-listed version
- Also available as LED version
- Data sheet: 3755.199



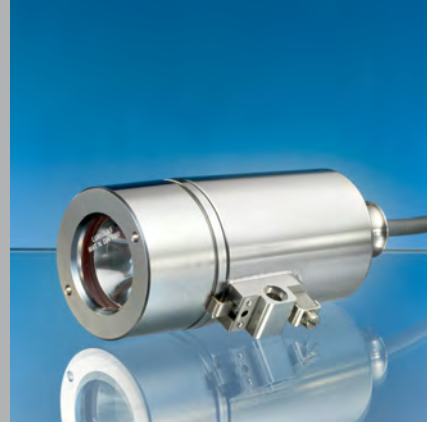
Lumistar luminaire USL 15/USL 35

- Fully enclosed compact luminaire in light-weight design with protective glass
- Stainless steel
- Smooth body
- Suitable for circular sight glass fittings to DIN 28120/28121 from DN 25 and for screw-type sight glass fittings similar to DIN 11851 from DN 50
- Rated voltage: 12 V, 24 V, 120 V, 230 V
- Output: up to 100 W (halogen light bulb)
- Protection class: IP 65
- Mounting by stainless steel hinged bracket to the counterflange of the sight glass fitting or by flange collar (DIN 11851)
- USL 35 = version for sterile work environments
- Also available as UL-listed version
- Also available as LED version
- Data sheet: 3755.239



Lumistar luminaire USL 16/USL 36

- Fully enclosed compact luminaire with protective glass
- Stainless steel
- Smooth body
- Suitable for circular sight glass fittings to DIN 28120/28121 from DN 25 and for screw-type sight glass fittings similar to DIN 11851 from DN 50
- Rated voltage: 12 V, 24 V, 120 V, 230 V
- Output: up to 100 W (halogen light bulb)
- Protection class: IP 65
- Mounting by stainless steel hinged bracket to the counterflange of the sight glass fitting or by flange collar (DIN 11851)
- USL 36 = version for sterile work environments
- Also available as LED version with 230 V/5 W
- Data sheet: 3755.492



Lumistar luminaire ESL 25

- Fully enclosed power luminaire with protective glass
- Stainless steel
- Suitable for circular sight glass fittings to DIN 28120/28121 or similar from DN 25 and for screw-type sight glass fittings similar to DIN 11851
- Rated voltage: 12 V, 24 V, 120 V, 230 V
- Output: up to 50 W (halogen light bulb)
- Protection class: IP 65
- Mounting by stainless steel hinged bracket to the counterflange of the sight glass fitting; DIN 11851, DN 65 by flange collar
- Data sheet: 3755.198



Lumistar luminaire ESL 26

- Fully enclosed power luminaire with protective glass
- Stainless steel
- Suitable for circular sight glass fittings to DIN 28120/28121 or similar from DN 50 and for screw-type sight glass fittings similar to DIN 11851
- Rated voltage: 12 V, 24 V, 120 V, 230 V, 240 V
- Output: up to 100 W (halogen light bulb)
- Protection class: IP 65
- Mounting by stainless steel hinged bracket to the counterflange of the sight glass fitting; DIN 11851, from DN 65 by flange collar
- Data sheet: 3755.153



Lumistar luminaire ESL 27

- Fully enclosed power luminaire with protective glass
- Stainless steel
- Suitable for circular sight glass fittings to DIN 28120/28121 or similar from DN 50 and for screw-type sight glass fittings similar to DIN 11851
- Rated voltage: 12 V, 24 V, 120 V, 230 V, 240 V
- Output: up to 100 W (halogen light bulb)
- Protection class: IP 65
- Mounting by stainless steel hinged bracket to the counterflange of the sight glass fitting; DIN 11851, from DN 80 by flange collar
- Data sheet: 3755.352



Lumistar timer, internal

- The luminaire is switched on by the integrated Lumistar timer
- Suitable for potentially explosive and non-explosive environments
- The luminaire switches off automatically once the preset time of about five minutes has elapsed
- For applications with Ex and non-Ex luminaires Lumistar USL 06 and Lumistar USL 07
- The timer is started by a switch on the luminaire or by a pushbutton with NC contact in the supply line
- Data sheet: 3755.182



Lumistar luminaire ME

- Sight glass luminaire, classic crescent-shaped variant combining view port and lighting
- Stainless steel
- Suitable for screw-type sight glass fittings to DIN 11851 or similar
- Sizes: for DN 65 to DN 125
- Rated voltage: 24 V AC/DC
- Output: max. 50 W (halogen light bulb)
- Protection class: IP 65
- The luminaire is bolted to the weld-on socket using the cap nut on the sight glass fitting
- Integrated pushbutton is standard feature
- Lumistar luminaires ME 100 and ME 125 are also available as LED versions
- Data sheet: 3755.192



Lumistar luminaire SLM

- Sight glass luminaire, classic crescent-shaped variant combining view port and lighting
- Aluminium
- Suitable for screw-type sight glass fittings to DIN 11851 or similar
- Sizes: for DN 65 to DN 125
- Rated voltage: 24 V AC/DC
- Output: up to 100 W (halogen light bulb)
- Protection class: IP 65
- The luminaire is bolted to the weld-on socket using the cap nut on the sight glass fitting
- Integrated pushbutton is standard feature
- Lumistar luminaires SLM 100 and SLM 125 are also available as LED versions
- Data sheet: 3755.174



Lumistar luminaire 80-225

- Sight glass luminaire, classic crescent-shaped variant combining view port and lighting
- Aluminium
- Suitable for screw-type sight glass fittings to DIN 11851 or similar
- Sizes: for DN 50 to DN 200
- Rated voltage: 24 V AC/DC
- Output: up to 100 W (halogen light bulb)
- Protection class: IP 65
- The luminaire is mounted on the counter-flange of the circular sight glass fitting using two or four bolts (depending on version)
- Integrated pushbutton is standard feature
- Lumistar luminaires 100, 125 and 175 are also available with LED lamps
- Data sheet: 3755.158



Lumistar timer, external

- Time switch for limiting the lighting time
- Suitable for non-explosive environments
- Rated voltage: AC/DC 24 to 230 V
- Adjustable time range: 0.1 seconds to 20 hours
- Also available in stainless steel
- Data sheet: 3755.320



Lumistar isolating transformer ETGs/EST

- Protective transformer for universal applications, installed in a fibreglass-reinforced polyester housing
- Suitable for non-explosive environments
- For connecting 24 V luminaires to 230 V supply voltage
- Rated voltage: 230 V AC/DC
- Output: 60 VA or 125 VA
- Protection class: IP 55
- Also available in stainless steel
- Also available without plastic housing for installation in control cabinets
- Data sheet: 3755.315



Lumistar luminaire 225-LED

- Sight glass luminaire, classic crescent-shaped variant combining view port and lighting
- Aluminium
- Suitable for circular sight glass fittings to DIN 28120 or similar
- Rated voltage: 12 V AC/DC, 24-48 V AC/DC or 120-230 V AC
- Output: 2 x 3 high-intensity LEDs, approx. 22 W
- Protection class: IP 65
- Lumistar luminaires 100, 125 and 175 are also available with LED lamps
- Data sheet: 3755.434



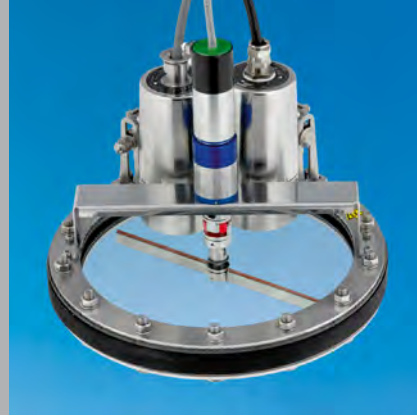
VISULEX camera system K15-Koax

- Camera with fixed lens for the inspection and remote monitoring of processes in, e.g. vessels, agitators and outdoor installations
- Stainless steel body with integrated CCD colour camera
- Protection class: IP 65
- Ambient temperature: +5°C to +40°C
- Angle of view: 28° to 120°
- Mounting by hinged bracket to circular sight glass fittings to DIN 28120/28121 or similar, or for screw-type sight glass fittings to DIN 11851 from DN 65
- Electrical connection: by external power supply
- Image transmission: max. 100 metres, via coaxial cable
- Image representation: PAL Germany or NTSC
- Connection to monitor or PC via video web server is possible
- Data sheet: 3755.425
- Other camera systems:
 - VISULEX camera system K15-ZP-E (zoom) Data sheet: 3755.429
 - VISULEX camera system K15-P-E (fixed lens) Data sheet: 3755.428



VISULEX camera system K55-P

- Camera with fixed lens for the inspection and remote monitoring of processes in, e.g. vessels, agitators and outdoor installations
- Stainless steel body with integrated CCD colour camera
- Protection class: IP 65
- Ambient temperature: +5°C to +45°C
- Angle of view: 28° to 60°
- Mounting by hinged bracket to circular sight glass fittings to DIN 28120/28121 or similar, or for screw-type sight glass fittings to DIN 11851 from DN 65
- Electrical connection: by terminal box
- Image transmission: max. 100 metres, via combination cable
- Data sheet: 3755.379



Lumiglas Ex motor drive EMA I-Ex

- EEx d IIC T5 CE IIC GD 95°C
- Motor drive for connecting various control elements, especially in potentially explosive environments: Gas zones 1 and 2; dust zones 21 and 22
- Powerful Ex motor drive in small, compact design for versatile applications, incl. operating sight glass wipers on sight glass disks
- Data sheet: 3755.436



Lumiglas sight glass fitting/luminaire unit:

- Screw-type sight glass fitting similar to DIN 11851 with integrated Lumistar luminaire ME in stainless steel
- Sizes: for DN 65 to DN 125
- Rated voltage/output: 24 V, up to 50 W



Lumiglas sight glass fitting/luminaire unit:

- Hinged sight glass with luminaire ESKS
- Ready-to-fit, hinged sight glass fitting with quick-release screwed closure enables fast opening and closing
- Ideal for adding and/or drawing off substances through the fitting
- Viewing diameter:
 - ESKS 150 = 165 mm
 - ESKS 225 = 235 mm
- Rated voltage/output: 24 V, up to 100 W



Lumiglas sight glass fitting/luminaire unit:

- Circular sight glass fitting to DIN 28120 with mounted Lumistar luminaire USL 07